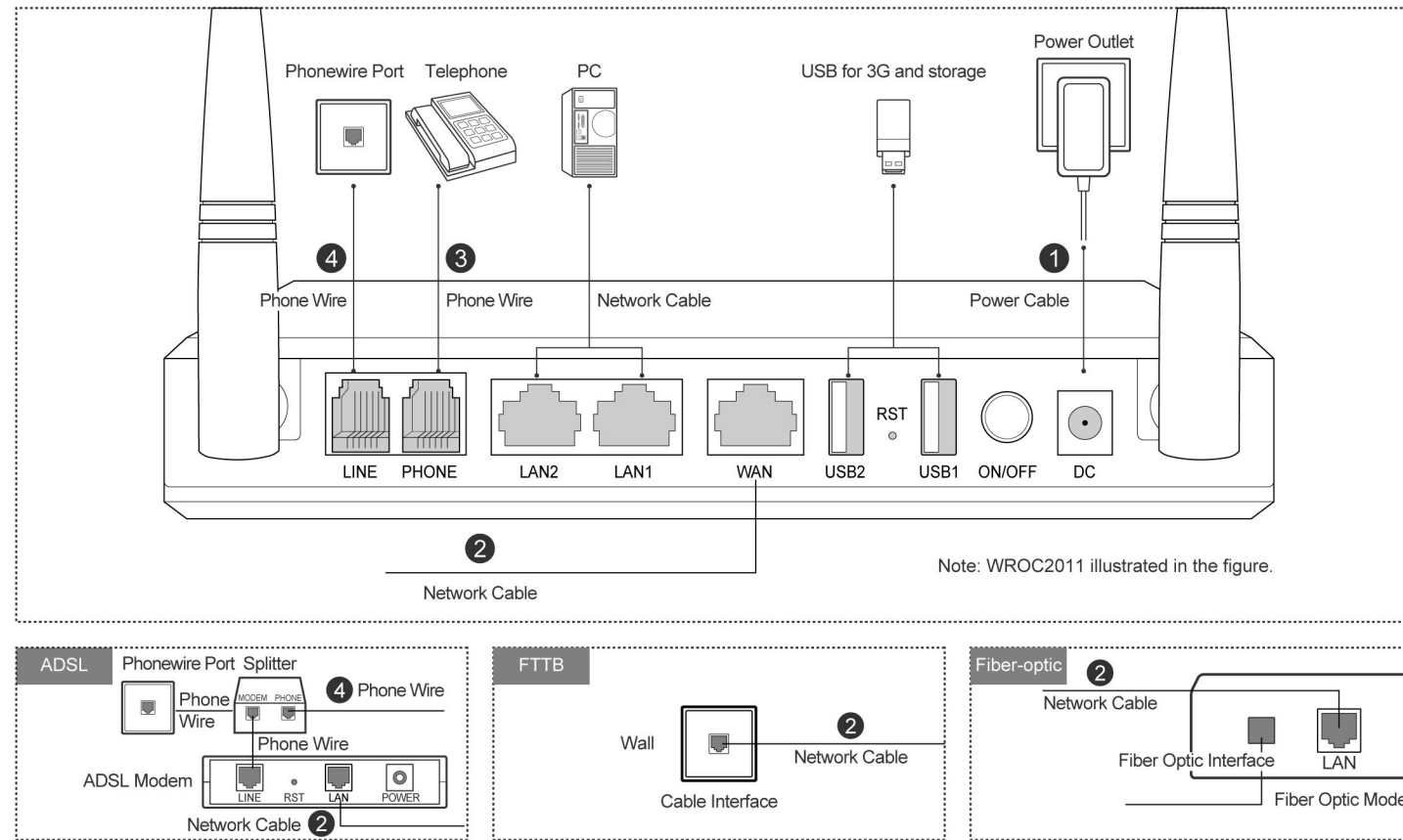


Quick Start Guide

Wireless Office Communication System

- Surf the Internet
- In-house WLAN
- Voice and video communication
- 3-way voice conference
- Mobile extension with WiFi smartphone
- USB for sharing files

Step 1 Cabling



Step 2 Checking

Press the ON/OFF button to turn on the device, and then check the LED status.

LED	Status of normal
PWR	Green light
WAN/LAN	Green light or green flashing
PHONE	Green when the phone is off-hook
LINE	Green light or green flashing during the talk

Step 3 Configuring the PC

For wired connection

1 Use Standard TCP/IP Properties for DHCP

Windows7

- Click > **Control Panel** > **Network and Sharing Center** > **Change Adapter Settings**.
- Right click **Local Area Connection**, choose **Properties**.
- Double click **Internet Protocol Version4(TCP/IPv4)**.
- Choose **Obtain an IP address automatically**, and then click **OK**.

Windows XP

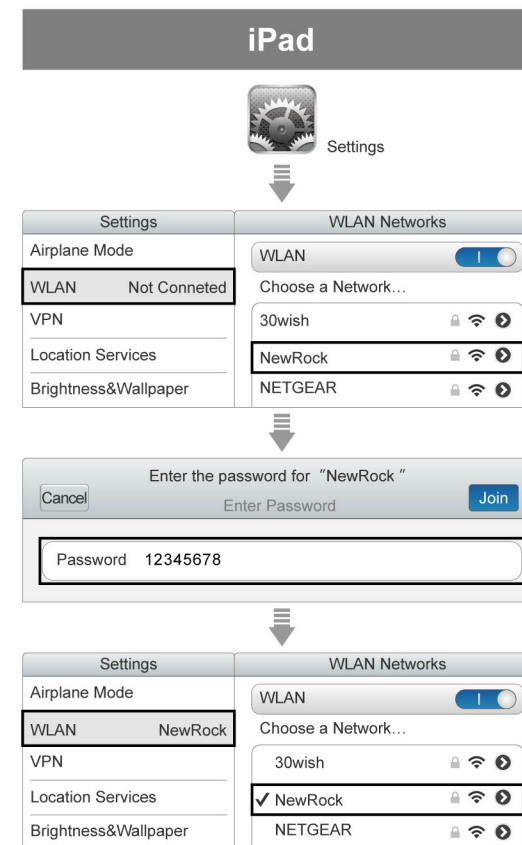
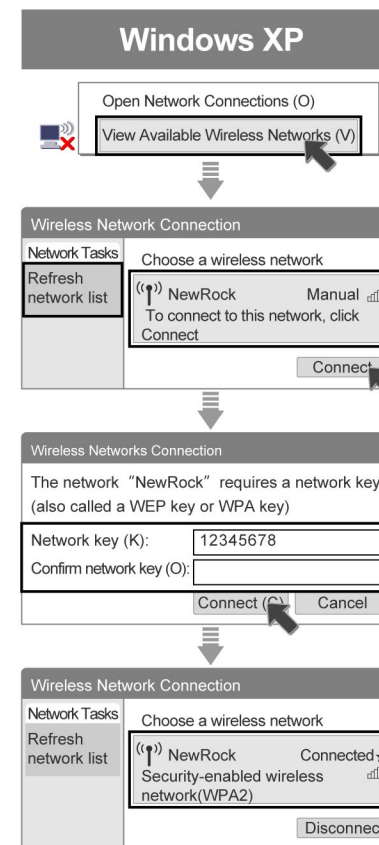
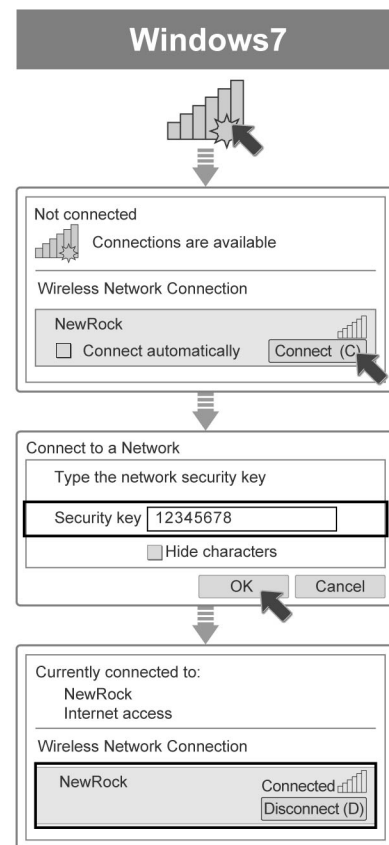
- Click **Start** > **Control Panel** > **Network Connections**.
- Right click **Local Area Connection**, choose **Properties**.
- Double click **Internet Protocol Version4(TCP/IPv4)**.
- Choose **Obtain an IP address automatically**, and then click **OK**.

2 Enter **w.com** in the address bar to visit the login interface of WROC.

For wireless connection

1 Connect to WROC wireless network (See the right pictures) SSID: **NewRock**, Encryption key: **12345678**

2 Enter **w.com** in the address bar to visit the login interface of WROC.



Step 4 Quick Installation

1 Enter the username and password

Username	admin
Password	admin
Login	

2 Select a network

Mode	Scenario
Bridge	The WROC connects to a router.
Router	The WROC connects to an ADSL modem.
Hotspot	The WROC connects to a Wi-Fi AP.
3G	The WROC connects to the 3G network.

3 Operate in accordance with the wizard (See the other paper)

Bridge mode



Scenario: The WROC connects to a router.

1 Configure the IP address

Network

IP address

Subnet mask

Default gateway

Primary DNS server

Secondary DNS server

Previous Next Cancel

2 Modify SSID and encryption key

Wireless settings

SSID

WPA/WPA2-PSK

Encryption key

Previous OK Continue to voice configuration Cancel

3 Select an application scenario

	Home	Enterprise
Outbound	Direct dialing	Using prefix
Inbound	No greetings	Playing the greetings to the caller
Phone number	<ul style="list-style-type: none"> Analog extension: 6 IP extension: 7 and 8 	<ul style="list-style-type: none"> Analog extension: 200 IP extension: from 205 to 212

4 Obtain phone number and password

Home

PSTN

Analog extension: 6

IP extension1 Number: 7 Password: 551286

IP extension2 Number: 8 Password: 774256

IP extension1: 7
IP extension2: 8

Enterprise

PSTN

Analog extension: 200

IP extension1 Number: 205 Password: 874583

IP extension2 Number: 206 Password: 741256

IP extension3 Number: 207 Password: 845125

IP extension4 Number: 208 Password: 745824

IP extension5 Number: 209 Password: 124823

IP extension6 Number: 210 Password: 148752

IP extension7 Number: 211 Password: 958726

IP extension8 Number: 212 Password: 998527

IP extensions: 205,206,207, 208,209,210, 211,212

5 Click OK to finish the wizard

Router mode



Scenario: The WROC connects to an ADSL modem.

1 Select a WAN connection type

WAN setup

PPPoE (ADSL) Select PPPoE if the device is connected to Internet through an

DHCP (Auto config) The device automatically obtains IP address, subnet mask, default

STATIC (Fixed IP) You shall manually configure IP address, subnet mask, default

Previous Next Cancel

2 Configure the IP parameters

PPPoE (ADSL)

WAN setup

Username

Password

Previous Next Cancel

STATIC (Fixed IP)

WAN setup

IP address

Subnet mask

Default gateway

Primary DNS server

Secondary DNS server

Previous Next Cancel

DHCP (Auto config) Skip to next step.

3 Configure the wireless network parameters (Refer to Bridge mode 2)

4 Continue to voice configuration (Refer to Bridge mode 3 4 5)

Hotspot mode



Scenario: The WROC connects to a Wi-Fi AP.

1 Select a hot spot

Choose a network

SSID	BSSID	Channel	Safe mode/encryption type	Network mode	signal
newrocktech-2	00:0e:a9:26:01:ed	1	WPA1PSKWPA2PSK/AES	11b/g/n	📶

Wi-Fi Hotspot settings

SSID newrocktech-2

MAC address 00:0e:a9:26:01:ed

Encryption key

Display the key

Connect Cancel

2 Continue to voice configuration (Refer to Bridge mode 3 4 5)

FAQ

1. Why can't I login to the device via WAN IP address?

Click **Network > Firewall > System security** to check whether remote management is enabled. If you still cannot log in to the WROC, change the remote management port to a non-80 port, such as port 8080.

2. Why is my Internet connection so slow?

Probably someone else is within the same wireless network with you. Please ensure that a SSID key is configured on the device.

Security mode: WPA/WPA2-PSK

Encryption key: a combination of 8-digit numbers & letters

3. How to register an IP Extension?

- Prepare an IP voice terminal. For example, install a softphone in the iPad.
- Enter account information of the IP extension on the terminal, including the phone number and password (IP extension account of the WROC).
- Enter the domain and proxy on the terminal. The domain value can be the IP address and port number of the WROC. The default port is 5060. Click **Voice > Trunk > IP trunk** to change Signaling local port.

3G mode



Scenario: The WROC connects to the 3G network.

1 Configure 3G service provider

3G configuration

Internet service provider(ISP) Custom

SSID

3G dialing number

PIN

User account

Password

Previous Next Cancel

2 Configure the wireless network parameters (Refer to Bridge mode 2)

3 Continue to voice configuration (Refer to Bridge mode 3 4 5)

4. The WROC is connected to a router and can access the Internet in bridge mode. However, the external IP extension fails to register to the WROC through the Internet.

- Check whether port mapping is enabled on the router connected to the WROC. If not, enable port mapping so that the signaling port of the WROC (**Voice > Trunk > IP extension**, the default is port 5060) and RTP port (10010-10130) can be mapped.
- Click **Voice > Basic > Domain name** to fill in the WAN IP address (or dynamic domain name) of the router.
- IP Extension registration, refer to Q3.

5. How to restore factory settings?

Press RST button for about 3 seconds, and release it when STU and PWR turn red.

Note: You can also contact us at gs@newrocktech.com for help.